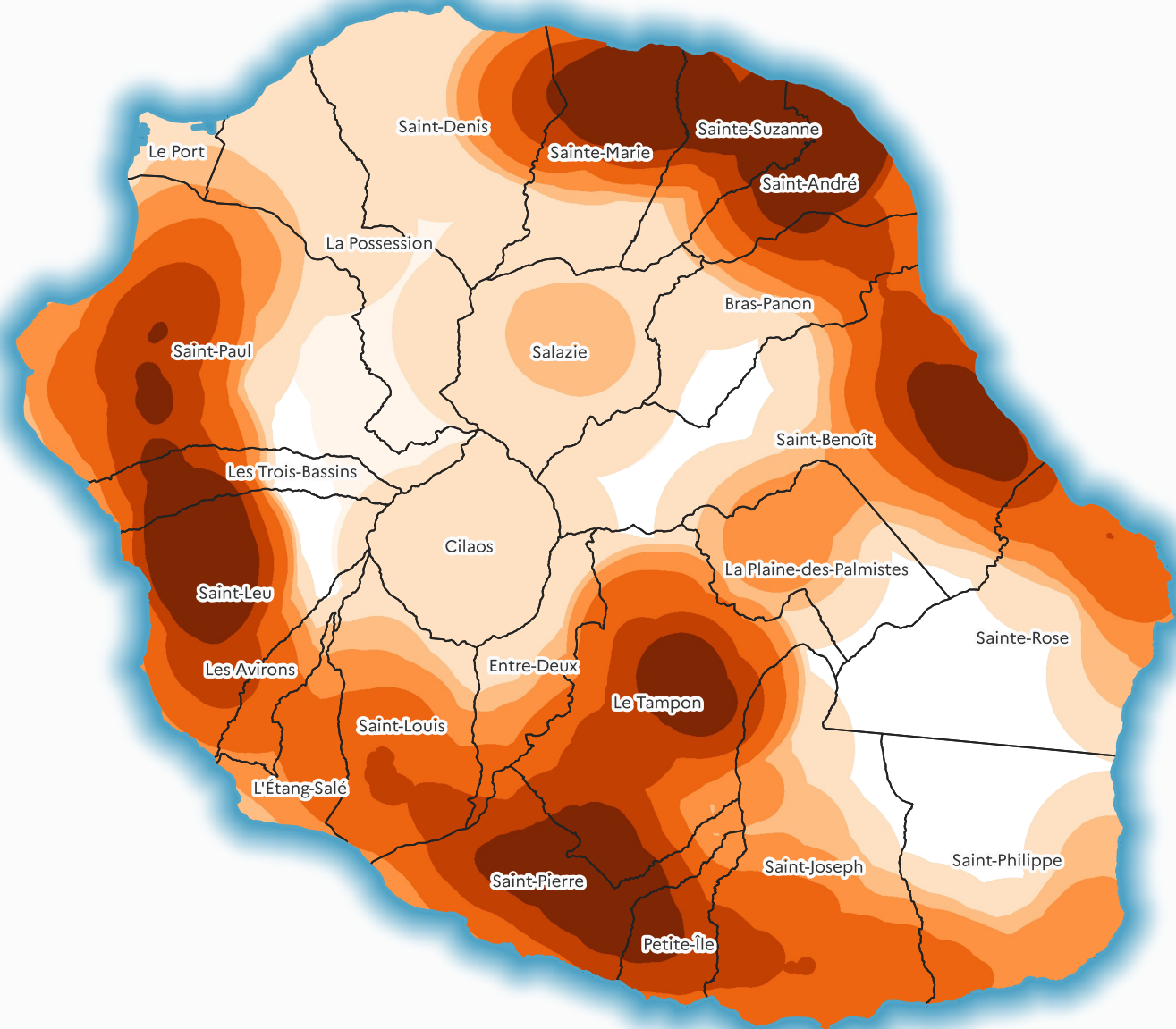
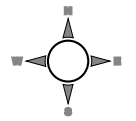


# Répartition de la surface agricole utile des exploitations appartenant à des agriculteurs de 55 ans ou plus au lieu-dit du siège en 2020










## Légende

### Administratif

 Commune

### Agricole

Surface agricole utile en hectare

-  <= 0
-  0 - 50
-  50 - 100
-  100 - 200
-  200 - 400
-  400 - 600
-  > 600

A retenir :  
 \* 17 280 hectares de SAU appartenant à des agriculteurs âgés de 55 ans ou plus recensés en 2020  
 \* SAU moyenne par exploitation : 6,6 hectares

